

Prom Dress Code

Proms are formal dances that require formal dresses, suits, and tuxedos. As with a school dance, shorts are not allowed unless worn under a skirt or dress.

Formal dresses can be strapless, have straps, or have sleeves. Clothing must not be below the bust line (no plunging necklines), and must be complete with no cut outs or sheer material that expose the chest, stomach, or sides. Backless dresses must not extend below the natural waist. Formalwear must extend to mid-thigh measuring at the end line of the main fabric, not at the end of any sheer material enhancing the formalwear. Slits must not extend above mid-thigh. Formalwear to include suits and tuxedos includes collared or tuxedo shirt, tie or formal neckwear, dress pants, and suit or tuxedo jacket.

Formalwear - meets dress code examples:



Does not meet dress code examples:

Not formalwear:



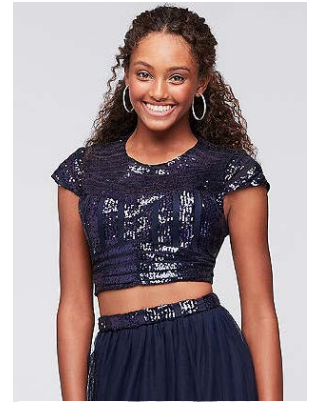
Not formalwear



Not Formalwear



Cut outs



Not Mid Thigh



Not Mid Thigh



Plunging Back



Plunging neck, slit not mid thigh

